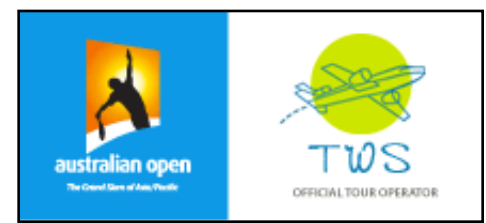


Australian Open 2012 Moderate & Independent Packages



Travel on your own Terms with our flexible land packages !

Personalize your very own itinerary. We do whatever you like to do superbly. We offer you Bed and breakfasts with outstanding Corporate Tennis Tickets. You may add air travel, explore the South Pacific, extend your trip in Melbourne, add services from our luxury packages or purchase additional tickets.

Rates and Packages to choose from:

TRIP NO.	Arrival & Departures	Number of nights	Rod Laver Arena Tickets	Sofitel Five Star	Atlantis 4 star
Early Rounds with Corporate Seats					
1	Jan 16 – 19	4 Nights	4 Sessions	2200 USD	1700 USD
2	Jan 16 – 21	5 Nights	5 Sessions	2850 USD	2250 USD
Early Rounds USTA Special : Land + R/T Air LAX- Melbourne+ Corporate Seats					
USTA	Jan 14/16-22	6 Nights	5 Sessions	4800 USD	3995 USD
Middle Rounds with Corporate seats					
3	Jan 21 – 23	2 Nights	3 Sessions	1650 USD	1450 USD
Middle Rounds + Quarter Finals with Corporate seats					
4	Jan 20 – 25	5 Nights	5 Sessions	3200 USD	2550 USD
5	Jan 23 – 26	3 Nights	4 Quarter Final Sessions	2400 USD	1990 USD
Semi and Final Rounds with reserved seating at Rod Laver Arena					
6	Jan 25 – 28	3 Nights	3 Semi Finals Sessions	1750 USD	1450 USD
7	Jan 28 – 30	2 Nights	Ladies and Men’s Finals	1550 USD	1400 USD
8	Jan 25 – 30	5 Nights	Final 5 sessions	3150 USD	2650 USD

All rates quoted per person double occupancy.
Single occupancy: Sofitel on Collins 200 USD per night. Atlantis 100 USD per night.
Family rooms for triple occupancy and Apartments available.

Land packages include:

Trips 1 through 5

- Tennis tickets, Rod Laver Arena court side corporate seats in section 18 rows F and G.
- Option of Tennis tickets in Hisense Arena corporate section behind baseline always in shade .
- Access to corporate lounge and corporate express outlet for drink and snacks.
- 1 Australian Open program per session . Value 16 dollars AUD.
- Accommodations and breakfasts
- USTA special package includes R/T Air from LAX to Melbourne on VAustralia . A stop in Sydney permitted.

Trips 6/7/8 : Semi and Final Rounds

- Reserved seating at Rod Laver Arena.
- Accommodations and breakfasts

Following services may be available upon request:

- Round Trip from SFO/LAX to Melbourne
- Upgrade your Rod Laver Arena seats to Corporate Gold section behind baseline and always in shade
- Airport transfers
- Tennis Camp with Ian Bale Former ATP tour player.
- Wine Country Excursion
- Walking tour of Melbourne with Kenneth Park

Accommodations Options:

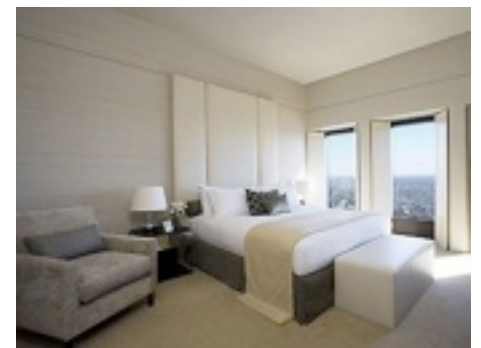
Sofitel Melbourne***** The Atlantis ****

Citadine Apartments on Bourke **** Riverside Apartments****

Sofitel on Collins *****

We have selected the 5 star award winning Sofitel on Collins for your stay. The Sofitel is designed by famous architect of the Louvre's Pyramid IM Pei. The rooms at the Sofitel feature breathtaking floor to the ceiling views with modern furnishing and LCD or Plasma TV. Sumptuous **buffet breakfasts** are included at the No 35 restaurant with spectacular views.

The Sofitel is ideally located, just minutes walk from Rod Laver Arena and is surrounded with great restaurants, shops and major city attractions .You are able to scan your tennis tickets in and out and leave the Arena and return to the hotel as often as you wished.



The Atlantis ****

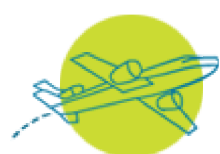
The Best Western Atlantis Hotel is a new 4 star hotel located in the heart of Melbourne with 232 rooms. These contemporary rooms all contain sleek modern furnishings, flat-panel 32-inch LCD TVs, a generous working desk. This Melbourne hotel also features a heated indoor pool, fully equipped gym and relaxing sauna. The Atlantis is minutes away from Rod Laver Arena with a free tram service to and from Melbourne Park.

Continental breakfasts are included.

Sign up
for a journey
like no other

Ready to go ? Or do you need something a little different ?

TERMS & CONDITIONS • Prices are per person in US dollars and are subject to availability at the time of booking. A deposit of \$1000 per person is required on confirmation of booking. Bookings are not guaranteed until a deposit is received. Full non-refundable balance of payment is required on or before 01 December 2011. Any bookings received after this day will require full non-refundable payment on confirmation. As all payments are non-refundable we strongly recommend travel insurance. Airline bookings require additional payments , you will be advised of the Airline cancellation policy at the time of booking. • Rod Laver Arena tickets are subject to the Australian Open Ticket Conditions of Sale and Entry.



Travels with Soha
Australian Open 2012